

Fire Plan



St Mary's Woodford

If you discover a fire, use the alarm bell in the disabled toilet as a Fire Bell. Then dial 999 to call the Fire Brigade to St Mary's Church, E18 2PA.

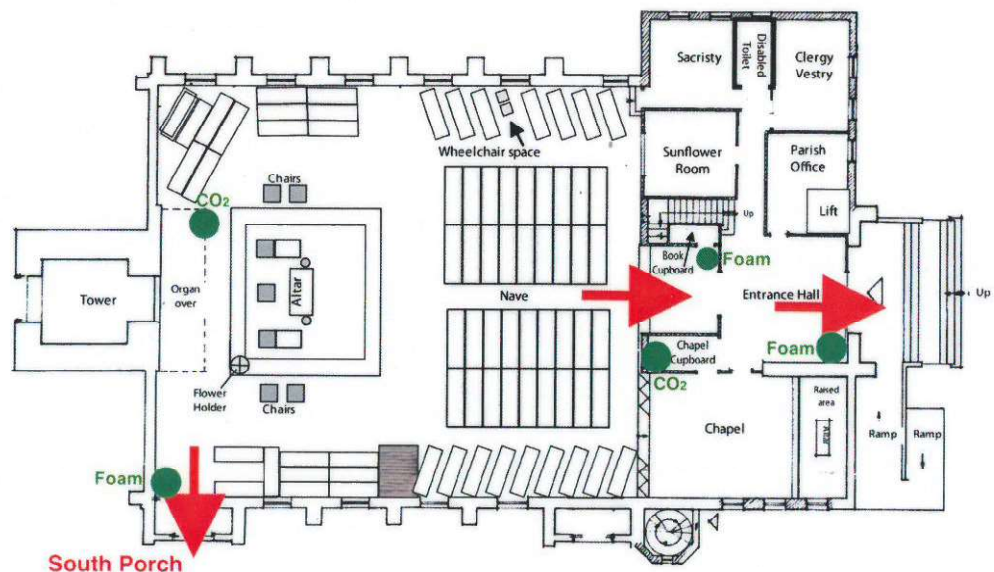
If you can, use an appropriate fire extinguisher or fire blanket to put out the fire but do not endanger yourself or others in doing so. At most, three or four people may stay to put out a fire.

If you hear the Fire Bell, leave the building by the nearest exit door that appears safe. On the diagrams, **Fire Exits are shown as red arrows**. Close all the doors behind you but do not delay to collect any possessions. Go to the **Assembly Point by the War Memorial** on the front lawn and do not leave the area until advised.

Ground floor

Leave by the South Porch near the organ or through the main entry doors.

Some people may also be able to reach the main doors through the Chapel and/or Sacristy (not marked as Fire Exits).



First Floor Leave by the main stairs (1) if it is safe to do so. If the main stairs are not safe, use the Fire Exit door through the far end of the Gwinnell Room (2).

Do **not** try to use the lift. Anybody unable to use the stairs should be helped down, if necessary using the evacuation chair in the Book Cupboard.

Fire Extinguishers are shown in green on the diagrams.

A fire blanket is in the kitchen for cooking fires.

CO₂ extinguishers for electrical fires are near the kitchen and the organ and also in the Chapel Cupboard.

For non-electrical fires, a water extinguisher is outside the Gwinnell Room and foam extinguishers are a) near the Front Entrance, b) near the door of the Book Cupboard and c) near the South Porch.

