

PEUGEOT

H^oRIZON & eH^oRIZON



USER GUIDE

Contents

- Page 3.** EasyGlide™ Ramp Operation
- Page 5.** Entry and Front Wheelchair Restraints
- Page 6.** Electric Assist Winch
- Page 7.** Rear Wheelchair Restraints
- Page 8.** Wheelchair Passenger Seat Belt
- Page 10.** Getting Ready to Travel & On Arrival
- Page 11.** Rear Folding Seats
- Page 13.** Optional Tip & Turn Seating
- Page 14.** Seat Belts
- Page 15.** Child Restraints
- Page 16.** Fitting Universal Child Restraints
- Page 16.** Fitting ISOFIX Child Restraints
- Page 19.** Puncture Repair System and Optional Spare Wheel
- Page 20.** AdBlue & Fuel - Range & Fill Level Indicators
- Page 21.** Technical Specifications, Warranty and Safety Information

IMPORTANT NOTE

This guide describes product features and options available throughout the range of models, some of which may not presently be available in your region. Not all features in this guide will be present on your vehicle and some images could appear different to your vehicle.

Where square brackets are used around [PLUS] the guidance refers to both the standard and PLUS model of the vehicle.



fig.1



fig.2



fig.3



fig.4



fig.5

EasyGlide™ Ramp Operation - Deploy

The EasyGlide™ ramp is a double action ramp. When not in use it can either be stored vertically at the rear of the vehicle or fold flat into the floor to allow easier access to the rear storage space.

- A. Pull the lever **fig.1a** on the left side of the ramp to release the ramp.
- B. From the flat position: Use the handle on the side of the ramp **fig.2a** to lift the ramp and pull out towards you **fig.3**.
From the vertical position: Use the handle on the ramp surface **fig.2a** to pull the ramp out towards you **fig.5**.
- C. The ramp will lower as you draw it out.
- D. Once fully lowered, the ramp is ready to use **fig.6**.

IMPORTANT NOTES

Please ensure the ramp is fully extended and rests on a stable and level surface when in use. Pay careful attention when boarding and alighting via the ramp if your vehicle is parked on a slope or a steeply cambered road, particularly when facing uphill as this increases the angle of the ramp. While the ramp surface is slip-resistant, extra care should be taken when operating in wet conditions.

When parking, leave enough room at the rear of the vehicle for wheelchair entrance and exit (approx. 3 meters to the nearest obstacle).



fig.6

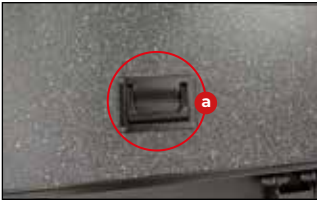


fig.1



fig.2



fig.3



fig.4



fig.5

EasyGlide™ Ramp Operation - Stow

Stowing the ramp vertically

- A. Using the handle on the ramp surface **fig.1a**, lift the ramp while rotating it around the end closest to the vehicle **fig.2**.
- B. Once the ramp is in the vertical position, lock it in place by pushing the lever on the left side of the ramp forwards **fig.3a**.

Note: Ensure the top section of the ramp is folded down before travelling. Otherwise rearward vision will be reduced and damage to the rear window may occur.

Stowing the ramp flat

Note: DO NOT attempt to stow the ramp in the flat position when there is a wheelchair present in the vehicle.

- A. Using the handle on the side of the ramp **fig.4a**, lift the ramp into the vehicle while keeping the main body of the ramp level **fig.5**.
- B. Allow the ramp to fall into the vehicle floor **fig.6**.
- C. Once the ramp is in the flat position, lock it in place by pushing the lever on the left side of the ramp forwards **fig.3a**.



fig.6



fig.1



fig.2



fig.3



fig.4



fig.5

Entry and Front Wheelchair Restraints

Note: For Horizon RS [Plus] models, please consult page 11 before beginning.

- A. Open the tailgate fully and deploy the ramp.
- B. Remove the rear wheelchair restraints from the floor anchors by lifting the toggle while sliding the restraints off the anchors (fig.1). Set the restraints aside for later.
- C. Position the wheelchair user at the bottom of the ramp. Now press the wheelchair restraint lock/release switch situated at the rear of the vehicle (fig.2).
- D. The front wheelchair restraints are located under the front seats (RE) or under/behind the rear seats (RS) (eHorizon). With the wheelchair positioned at the bottom of the ramp, pull the restraints down the full length of the ramp (fig.3) and attach them to either side of the front of the wheelchair frame (fig.4).

IMPORTANT NOTE

Don't attach the restraint hooks¹ to the wheels or any plastic or removable parts of your wheelchair. Some wheelchairs have a designated attachment point which will be marked with a ⚡ (illustrated in fig.4) In this case these points must be used when securing the wheelchair.

- E. Push or drive the wheelchair inside the vehicle (fig.5) using the winch for assistance if needed/fitted (see page 6).
- F. Once the wheelchair passenger is in place press the wheelchair restraint lock/release switch again (fig.2). The light on the switch will now turn off indicating that the restraint system is locked, so that it can retract but cannot be extended. Take up any additional slack in the straps by rolling the wheelchair backward and forward as necessary. The straps will secure the front of the wheelchair throughout the journey.

¹ Depending on preference, your vehicle may be fitted with J hooks (as shown in this guide) or webbing straps with tongue and buckle connectors.



fig.1



fig.2



fig.3



fig.4



fig.5

Electric Assist Winch

The winch system is designed to assist unpowered wheelchairs in entering/exiting the vehicle, although powered wheelchair users may still find it helpful when steering up/down the ramp and for traversing the changes in ramp gradient.

Note: It's recommended that an attendant should be present to operate the winch and safeguard against the wheelchair tipping over backwards.

- A.** The control for the winch is located at the rear of the vehicle (fig.1). To extend (fig.1a) and retract (fig.1b) the winch belt press the corresponding arrow button. Please see the bottom of page 22 if the remote operation is reversed.
- B.** When extending/retracting the winch maintain tension on the belt to avoid snagging, even when not moving a wheelchair (fig.2).
- C.** Attach to secure points on the front of the frame using the clips (fig.3). Many people prefer this to be attached beneath the footrests, although this may not be possible with all designs of wheelchair.
- D.** Manoeuvre the wheelchair into/out of the vehicle using the winch to assist in the propulsion/steering (fig.4).
- E.** When entering the vehicle, please follow the instructions on page 5, specifically step F, to prevent the wheelchair from rolling back once in the travelling position.
- F.** Once you've finished moving the wheelchair disconnect the clips and retract the winch belt (fig.5). Stow the control back in its holder.

IMPORTANT NOTE

The safe working load of the winch will be reduced when your car is facing uphill on an incline or if any other condition has increased the ramp angle.

Powered wheelchair users: It's NOT recommended to disengage your wheelchair motors when travelling in or manoeuvring into/out of the vehicle. Disengaging the motors will prevent the wheelchair's brakes from working and could lead to an uncontrollable situation.

For this reason, the winch is unable to manoeuvre a powered chair without drive assistance from the chair.

The winch should NOT be used to secure the wheelchair while travelling. Always use the dedicated front restraints.

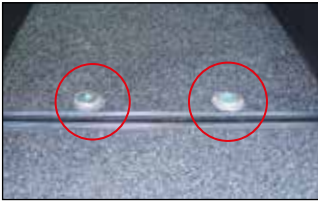


fig.1



fig.2



fig.3



fig.4




fig.5

Rear Wheelchair Restraints

- A.** Retrieve the rear wheelchair restraints. The restraints attach to the anchors at the rear of the vehicle (fig.1). To attach the restraints, lift the toggle then slide them onto the anchors on the floor (fig.2). Check the restraints are secure by trying to slide them off without lifting the toggle. The restraints are now fixed to the vehicle floor, ready for use.
- B.** Now attach both rear restraint hooks¹ to the rear frame of the wheelchair. To extend the restraints push down on the red lever and pull the strap to the required length (fig.3). Ensure that the restraints are fixed at approximately 45 degrees.

IMPORTANT NOTE

Don't attach the restraint hooks¹ to the wheels or any plastic or removable parts of your wheelchair. Some wheelchairs have a designated attachment point which will be marked with a . In this case these points must be used when securing the wheelchair.

- C.** To secure the restraints, locate the adjusters found on the side of each restraint and turn until the straps become taut (fig.4).
- D.** The rear of the wheelchair is secure when both wheelchair restraints have been attached and tightened (fig.5). You should now apply the wheelchair brake.

¹ Depending on preference, your vehicle may be fitted with J hooks (as shown in this guide) or webbing straps with tongue and buckle connector.



fig.1

Wheelchair Passenger Seat Belt

- A. Locate the seat belt hanging from the roof of the vehicle **fig.1**. It will be positioned behind the wheelchair passenger and may be fitted on the right or the left.
- B. Locate the tongue that is fixed at the very end of the belt **fig.2a** and secure this in the buckle nearest to the seat belt reel box **fig.3**. You will hear a click once the tongue has been properly inserted.
- C. Pull the seat belt across the passenger's chest and secure the other tongue **fig.2b** in the buckle farthest from the seat belt reel box **fig.4**. You will hear a click once the tongue has been properly inserted.

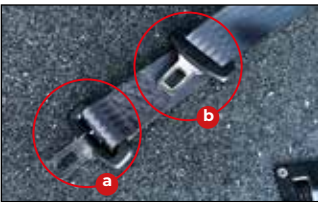


fig.2

Note: The seat belt should be flush against the passenger's body and not caught on the arms, wheels or any other part of the wheelchair. For example, the belt should be routed under the armrests or through the chair back, if there is a gap to do so **fig.5**.



fig.3



fig.4

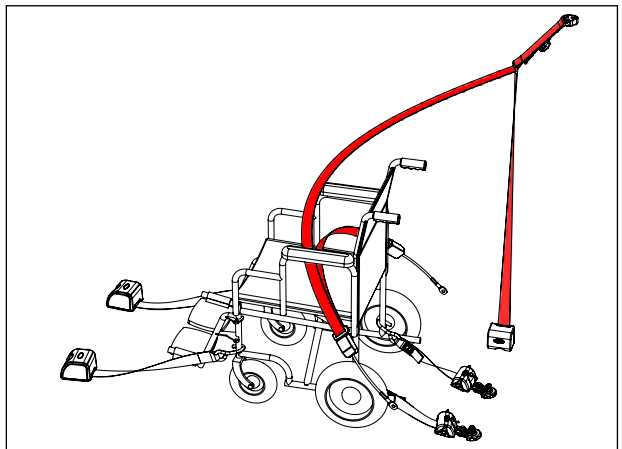


fig.5



fig.6

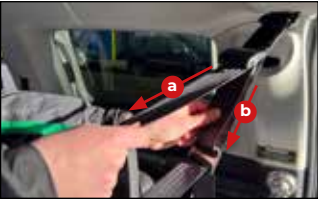


fig.7



fig.8

Wheelchair Passenger Seat Belt

- D. The seat belt should rest on the passenger's shoulder without rubbing against their neck **fig.6**. If necessary, the shoulder belt height can be raised **fig.7a** or lowered **fig.7b** by feeding the belt through the adjuster.
- E. The lap belt should sit low, around the passenger's hips **fig.6** to provide the greatest comfort and securement.

IMPORTANT NOTES

The shoulder belt must not drop below the height of the passenger's shoulder **fig.8**.

The belt should not twist as it crosses the passenger's body. Remove twists by releasing the tongues from the buckles and twisting the belt in the opposite direction.



fig.1



fig.2



fig.3



fig.4



fig.5

Getting Ready to Travel

With the wheelchair restraints and wheelchair passenger seat belt firmly secured, you're almost ready to go.

- A. Stow the ramp following the instructions on page 4.
- B. Finally, pull down the tailgate using the pull strap **fig.1** while keeping your head clear and ensure it engages in the lock.

Now you're ready to go.

On Arrival

- A. When you arrive at your destination open the tailgate and deploy your ramp following the instructions on page 3.
- B. Unfasten the wheelchair passenger seat belt and press the wheelchair restraint switch **fig.2** (the red light will come on).
- C. Detach the rear restraint hooks¹ from the wheelchair frame by holding down the red lever and removing the hooks from the attachment points **fig.3**. Then remove the rear restraints from the vehicle floor by lifting the toggle and sliding them from the anchors **fig.4**. Release the wheelchair brake.
- D. Guide the wheelchair passenger down the ramp with the front restraints still attached. If needed, use the winch to assist you according to the instructions on page 6 (if fitted). Once clear of the vehicle, detach the front restraints and hold them as you walk in, allowing them to retract.
- E. Turn the restraint switch back off. It's important that you remember to do this or you may drain the battery while the vehicle is not in use.
- F. Store the rear restraints by attaching them to the floor anchors or the anchors at the sides of the vehicle (if fitted) **fig.5**.

¹ Depending on preference, your vehicle may be fitted with J hooks (as shown in this guide), on webbing straps with tongue and buckle connectors.



Fig.1



Fig.2



Fig.3



Fig.4

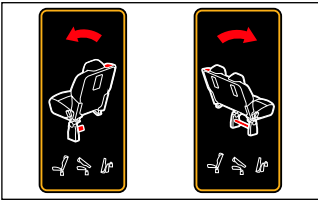


Fig.5

Rear Folding Seats: eHorizon RS

The folding procedure has not been affected by the conversion. Please consult your Peugeot handbook.

Rear Folding Seats: Horizon RS [PLUS]

Note: For there to be adequate space for the wheelchair user in the Horizon RS at least the double seat must be secured in the folded position. This does not apply to the PLUS model.

Folding the seats:

Before beginning, ensure the front seats are far enough forward to allow the rear seats to be folded. The front seats can be moved back once the process is completed.

- A. Ensure the head restraints are fully down.
- B. The seatback release grip is located at the top of the seat closest to the door **Fig.1**.
- C. Pull the release grip to unlatch the seatback. The red indicator will be visible when unlatched **Fig.1**.
- D. The leg release bar (double seat) and leg release tab (single seat) are located under the seat in the centre of the vehicle **Fig.2 Fig.3**.
- E. Pull the bar to unlatch the seat legs.
- F. The seat is now ready to be folded forwards.
- G. Support the top and bottom of the backrest while guiding the seat up and forwards into its fully stowed forward position **Fig.4**.
- H. Instructions for the rear folding seat operation can be found on stickers on the back of the seats **Fig.5**.

IMPORTANT NOTE

Folding or unfolding the seats must only be done when the vehicle is stationary.

Ensure the seats are fully latched and secured in the forward position. A seat that is not correctly stowed compromises the safety of passengers in the event of sudden braking.



Fig.1

Rear Folding Seats: Horizon RS [PLUS]

Ensure driver and passenger front seats are far enough forward to allow rear seat to unfold into original position. Front seats can be moved back once unfold is completed.

For ease, folding movements should be completed via side passenger door.

Deploying the seats:

- A. The seat release tab is located on the underside of the seat closest to the door **Fig.1**.
- B. Pull the tab to release the seat from the stowed position **Fig.2**.
- C. Support the top and bottom of the seatback while guiding the seat base down towards the floor **Fig.3**. Before the seat base is fully flat, unfold the seat back avoiding contact with the surrounding parts of the vehicle.
- D. Press down on the seat base to lock the leg into the floor. Ensure the spring at the bottom of the leg is fully compressed and that movement of the latch is restricted **Fig.4**.
- E. Push back on the seatback until it locks onto the bars on the side of the vehicle, located at the top of the seatback. When the red indicator on the seatback release grip is no longer visible the seat will be secured **Fig.5**.



Fig.2



Fig.3



Fig.4



Fig.5

IMPORTANT NOTE

Folding or unfolding the seats must only be done when the vehicle is stationary.

Ensure the seats are fully latched and secured in the deployed position. A seat that is not correctly deployed compromises the safety of passengers in the event of sudden braking.



fig.1



fig.2



fig.3



fig.4



fig.5

Optional Tip & Turn Seating

Optional tip and turn seats may be fitted in the back of your vehicle allowing you to travel with additional rear passengers. The seats can swing around to the front facing position when required and are stored flat against the vehicle sides when wheelchair access is required.

Deploying the seats:

- A. To move the seats into position for travel, pull on the black strap at the back of the seat **fig.1**. This will unlock the seat and allow rotation **fig.2** until it clicks into place.
- B. Pull out the knob on the side of the seat next to the seat belt buckle to lower the seat base into place **fig.3**. The tip and turn seat is now ready to use **fig.4**.

Stowing the seats

- A. Pull out the knob on the side of the seat next to the seat belt buckle **fig.3** and lift the seat base back into the vertical position. It will click back in place.
- B. Pull on the black strap at the back of the seat **fig.1**. This will unlock the seat and allow rotation until it clicks into place **fig.2**.

Seatbelts

- A. The seatbelt is held in a bracket at the side of the seat to allow for easier access **fig.5**. Locate the tongue of the belt and pull it in front of you with a smooth movement, checking that it does not twist, and insert it into the buckle on the inboard side of the seat.
- B. You will hear a click once the tongue has been properly inserted. To check that the seat belt is fastened correctly, pull on the strap and check that the tongue has remained engaged in the buckle.
- C. To unlock your seatbelt press the red button on the buckle. Guide the seatbelt as it is reeled in.

Seat Belts

Seating modifications/additions as part of the conversion

Your vehicle may have been supplied with either triple bench seats (RS) or single seats (RE) in row 2 depending on the vehicle model. Specialist Tip & Turn seats may also have been added in the third row depending on the specifications of your vehicle (see page 13).

All the seats fitted to your vehicle have been tested to the same standards as the base vehicle and meet the requirements for seat strength, safety-belts, and their anchorages.

Adult Occupant Seat Belts

In order to be effective, a seat belt must:

- Have the lap part of the belt positioned as low as possible on the pelvis
- Have the shoulder part of the belt positioned in the hollow of the shoulder
- Be tightened as close to the body as possible
- Be used to restrain only one person, regardless of age
- Not show any signs of cuts or fraying
- Not be altered or modified in any way since any changes may render the belt ineffective

The driver must ensure that passengers use the seat belts correctly and that they are all fastened before setting off. Wherever you are seated in the vehicle, always fasten your seat belt, even for short journeys. Seat belts are designed to retain occupants in their seats, and so prevent or reduce injuries in a crash.

Should one of your seat belts be cut, show signs of severe fraying or be involved in a severe incident, it should be replaced immediately by a qualified workshop with the skills and equipment needed to perform the task.

Your vehicle is fitted with the original Peugeot seat belt apparatus. Should you require any instruction on the operation or maintenance of the seat belts, please refer to the base vehicle handbook.

Child Restraints

Always comply with local or national regulations. In some countries, the use of child restraint systems is forbidden on certain seats.

In accordance with European regulations, all children under the age of 12 or less than 150cm tall must travel in approved child seats suited to their weight, on seats fitted with a seat belt or ISOFIX anchors. Children weighing less than 9kg must travel facing rearwards, but it is recommended that children should travel facing rearwards in the vehicle as long as possible.

NOTE: Do not hold a child on your lap while the vehicle is moving.

Only child restraints certified to ECE-R129 or ECE-R44.03 (or later) have been tested and approved for use in your vehicle.

The row 2 seats are the most convenient location to fasten a child restraint system. If the child restraint is installed in row 3 it will have to be removed to allow the wheelchair user access through the rear of the vehicle.

IMPORTANT NOTE

This user guide contains conversion specific child restraint fitting advice. Consult your base vehicle handbook for additional information on the safe use of child restraints.

Horizon RS/RE [PLUS] and eHorizon RE: child restraint systems advertised as recommended for your vehicle may no longer be suitable due to the modifications to the vehicle. If in doubt about the suitability of a child restraint system seek professional guidance.

Do not modify child restraints in any way. Do not stick anything on the child restraint systems and do not cover them with any other materials.

Fitting Universal Child Restraints

When fitting a child restraint secured by the adult occupant seat belts ensure that the seat belt is correctly positioned around the child restraint in line with the instructions provided by the child restraint manufacturer. The child restraint should be held firmly on the vehicles seat by the belt, ideally in contact with the seat backrest. It should not touch the headrest.

If necessary, move the seat in front of a child restraint forwards so that the legs of the child in a forwards facing child restraint or the rearwards facing child restraint itself do not touch the seat in front.

Remember to fasten the seat belts or the harness of the child restraint, keeping the slack relative to the child's body to a minimum, even for short journeys.

IMPORTANT NOTE

Ensure that there is no seat belt or seat belt buckle under the child restraint causing it to be unstable.

Child weight and age guide				
	Groups 0 & 0+ Under 13kg Up to about 1 year old	Groups 1 From 9 to 18 kg From about 1 to 3 years old	Groups 2 From 15 to 25 kg From about 3 to 6 years old	Groups 3 From 22 to 36 kg From about 6 to 12 years old
Type of seat	Rearward-facing child seat	Rearward/Forward-facing child seat*		Forward-facing booster cushion
Row 1	Consult your base vehicle handbook			
Row 2	Suitable for universal category child restraints approved for use in this mass group			
Row 3				

*It's recommended that a child should travel facing rearwards for as long as possible.

Fitting ISOFIX Child Restraints

The ISOFIX restraint system provides fast, reliable and safe fitting of child restraints. Where possible, it is recommended to use an ISOFIX or i-Size child restraint. Please refer to the appropriate following section for your vehicle model.

Horizon RS [PLUS]

None of the seats within your vehicle are suitable for the fitment of ISOFIX or i-Size child restraints. Please refer to the section on [Fitting Universal Child Restraints](#).

eHorizon RS

Instructions for fitting ISOFIX/i-Size child restraints can be found in your Peugeot handbook.

[Continued on next page](#)



fig.1



fig.2



fig.3



fig.4



fig.5

Fitting ISOFIX Child Restraints

Horizon RE [PLUS] & eHorizon RE

The single seats (RE) in the second row of your vehicle are fitted with ISOFIX anchor points that accommodate ISOFIX child restraints. Each seat has 3 anchor points:

- Two front rings located where the seat backrest and cushion meet **fig.1**.
- A rear ring located at the bottom of the rear surface of the seat backrest **fig.2**.

To fit an ISOFIX child restraint:

- A.** Place the child restraint on the seat and align the two rigid arms on the restraint with the two front rings on the seat.
- B.** Firmly push the base of the child restraint towards the seat backrest until the latches in the attachment arms indicate that they are engaged on the rings.

For child restraints with a top tether strap:

- C.** Pass the top tether strap between the seat backrest and the head restraint as pictured in either **fig.3** or **fig.4**. **DO NOT** pass the strap over the top of or to either side of the head restraint **fig.5**.
- D.** Attach the hook to the rear ring on the seat **fig.2**. Ensure the strap is not twisted and then tighten using the top tether tensioner on your child restraint until it indicates that the strap is suitably tight.

You may need to twist the hook as it passes under the head restraint to prevent it from becoming stuck.

For child restraints with a support leg:

- E.** Extend the support leg so that it makes firm and steady contact with the floor. An indicator on the support leg should show when firm contact has been achieved.

Fitting ISOFIX Child Restraints

IMPORTANT NOTE

Strictly follow the fitting instructions provided with the child restraint and familiarise yourself with the location of the latch, top tether, and support leg indicators. Incorrect installation of a child restraint compromises the protection of the occupant during a crash.

Horizon RE [PLUS] & eHorizon RE: The head restraints are not removable or adjustable. Before travelling ensure the head restraint is not causing any residual slack to be left in the strap.

When purchasing an ISOFIX child restraint make sure that you know the correct mass group and ISOFIX size class for the intended seating locations. Check the head restraint does not interfere with the child restraint or its top tether tensioner.

	Child weight and age guide								
	Groups 0 & 0+ Under 13kg Up to about 1 year old				Group 1 From 9 to 18 kg From about 1 to 3 years old				
Type of seat	Cot		Rearward-facing child seat			Rearward/Forward-facing child seat*			
ISOFIX Size Class	F, G	E	D	C	D	C	BI	B	A
Row 1	Consult your base vehicle handbook								
Row 2 Bench (eHorizon RS)									
Row 2 Bench (Horizon RS [PLUS])	No ISOFIX								
Row 2 Single (All RE models)	X	IL	X	IL	X	IL/IUF			
Row 3	No ISOFIX								

*It's recommended that a child should travel facing rearwards for as long as possible.

In order to accommodate an ISOFIX child restraint the seat in front of the restraint may need to be adjusted forward and have its backrest placed in an upright position.

Key:

X – Not suitable

IL – Suitable for use with ISOFIX child restraint systems in the semi-universal category, which may be either:

- Rear-facing, fitted with a top tether strap or a support leg
- Forward-facing fitted with a support leg

IUF – Suitable for use with forward-facing ISOFIX child restraint systems in the universal category secured using a top tether strap

A – Full size, front-facing child seat

B – Reduced size (alt. 1), front-facing child seat

BI – Reduced size (alt. 2), front-facing child seat

C – Full size, rear-facing child seat

D – Reduced size, rear-facing child seat

E – Rear-facing infant seat

F – Left-hand lateral facing cot

G – Right-hand lateral facing cot



Fig.1

Puncture Repair System: Tyre Inflator and Sealant

Should you experience a flat tyre, a can of tyre inflator and sealant is provided. This is located in the front passenger door pocket **fig.1**.

Use according to manufacturer's instructions that are detailed on the can.



fig.2

Optional Space-Saver Spare Wheel

The Horizon™ may be fitted with a space-saver spare wheel **fig.2. Please note the following when in use.**

The space-saver wheel is only for use as a temporary spare and has been designed to enable the vehicle to be driven to a place of repair. The damaged wheel/tire should be replaced and refitted as soon as possible.

The spare wheel can be used on either the front or rear axle. The vehicle should not be driven with more than one spare wheel fitted.

When the space-saver has been fitted, the vehicle should be driven with caution and at NO MORE THAN 50 mph (80 km/h).

Incorrect use of the temporary spare wheel can lead to a loss of control of the vehicle, potentially resulting in a collision and/or serious injury.

Do not use the temporary spare wheel under any circumstances if it is damaged or worn down to the tread wear indicators.

**INFLATE TO
60 PSI
(420 KPA)**



Fig.1

AdBlue - Range Indicators

Peugeot BlueHDi vehicles have a specific AdBlue tank. This has a blue filler cap, located to the left of the diesel fuel filler cap **Fig.1**.

The AdBlue tank holds 15 litres of fluid which, under normal driving conditions, should last around 2,650 miles (4,250 km). Actual range may vary considerably depending on your driving style and the vehicle.

The AdBlue system is set to give its first range alert with a remaining 1,500 mile (2,400 km) range. Several alerts are triggered successively during the remaining range until the tank is empty and the vehicle is immobilised.

Upon receiving the first alert, it's recommend that the tank is fully refilled with Adblue fluid (approximately 10 litres). A minimum of 5 litres of AdBlue must be added for the system to register a top-up.

After refilling with Adblue, please wait 5 seconds after starting the engine before moving the vehicle to allow the refilling to be registered by the system.

Please refer to your Peugeot User Manual for all other guidance regarding AdBlue.

Fuel - Range & Fill Level Indicators

The fuel tank in Peugeot PureTech and BlueHDi vehicles is replaced as part of the conversion. The performance of fuel fill level and vehicle range indicators may be impacted due to the difference in shape and capacity between the new and the original fuel tanks.

Allied Mobility Horizon & eHorizon

WAV type: WAVAV

PAS 2012-1:2019 Compliant: Yes

Base vehicle: Peugeot Rifter & eRifter

Model	Horizon RS		Horizon RE		eHorizon	
	Standard	PLUS	Standard	PLUS	Standard	PLUS
Wheelchair Access Entrance Dimensions						
Width (mm)	820		820		820	
Height (mm)	1370		1370		1370	
Designated Travelling Position						
Width (mm)	810		605	810	800	
Length (mm)	1020	1040-1410*	1475	1825	1120	
Wheelchair space gradient (°)	3.25		3.25		8.2	
Maximum seated eye-line height (mm)	1247		1247		1275	
Internal roof height (mm)	1418		1418		1430	
Maximum wheelchair mass (kg)			200			
Maximum Access Dimensions						
Width (mm)	810		605	810	800	
Length (mm)	1020	1040-1410*	1475	1825	1120	
Height (mm)	1370		1370		1370	
Ramp						
Width (mm)	830		830		830	
Length (mm)	1248		1248		1248	
Angle when deployed onto road (°)	13.7		13.7		12.8	
Position			Rear			
Safe working load (kg)			400			
Attachment method			Permanent			
Maximum ramp projection when deployed (mm)			985			
Maximum Seating Capacity						
Maximum number of designated wheelchair travelling positions	1		1		1	
Maximum number of other passenger seating positions (including driver)	5	7	4	6	5	6
Maximum number of ISOFIX positions	0		2		3†	2
Up-front wheelchair position available			No			
Limitations on seating capacity when carrying an occupied wheelchair	See note 1	See notes 2 & 3	N/A	See note 2	See note 2	
Other						
Winch SWL (where fitted) (kg)			275			
Fuel tank capacity (litres)	47/50		47/50		N/A	
Ground clearance (mm)			170			
Type of spare wheel or puncture repair system fitted			Tyre weld or temporary spare wheel			
Towing eye location			Glovebox			

*Wheelchair length is restricted to 1040mm when transporting more than 2 seated passengers.

†Vehicle is equipped with i-Size

1. Double seat must be folded to accommodate a wheelchair, single seat may be folded to accommodate larger wheelchairs.
2. Optional Tip & Turn seats cannot be used (where fitted) when carrying a wheelchair.
3. Double (and single) seats may be stored to accommodate larger wheelchairs.

Peugeot Horizon & eHorizon

Please find below information on Fuses, Relays, Switches & other components which have been added or modified during the conversion process

Fuse	System	Rating	Location		
			Horizon RS [PLUS]	Horizon RE [PLUS]	eHorizon RS & RE
1	Winch	25A	Under bonnet		
2	Electric Restraints	5A			
Relay					
1	Winch	30/40A	Behind rear right side panel		
Switch					
1	Electric Restraints	1kV:3A	Rear right side panel		
2	Safety Interlock (Tilt switch)	300mA	Within tailgate		
Other					
1	Winch	25A	Behind Centre Console		Behind rear Seats, on floor
2	Left Electric Restraint	200mA	Under bench seats	Behind front seats, on floor	
2	Right Electric Restraint	200mA			

Conversion Warranty

The Conversion Warranty covers parts adapted by Allied Mobility for three years / 36,000miles (whichever comes sooner). When leased via the Motability Scheme the Conversion Warranty covers parts adapted by Allied Mobility for three years with unlimited mileage.

Should you need to source replacement parts for your vehicle that relate to the wheelchair accessible conversion please contact Allied Mobility.

FREEPOST ALLIED MOBILITY

Registered address: 230 Balmore Road, Glasgow, G22 6LJ

FREEPHONE: 0800 587 9656

For international enquiries telephone: +44 (0) 141 336 1556

Email: info@alliedmobility.com

IMPORTANT NOTES:



It is recommended that any passenger travelling in their wheelchair should be seated in a wheelchair meeting the requirements of ISO 7176-19:2008 or later. The presence of the hook symbol at the tie-down attachment points is generally an indicator that your wheelchair has been designed in line with these requirements. However, if in doubt, please consult the literature that accompanied your wheelchair or speak to your wheelchair manufacturer.

Before entering the vehicle with a wheelchair please remove any baggage that is hanging off the back of the wheelchair or the wheelchair's handles. Additional weight hanging off the rear of a wheelchair can cause the wheelchair to become unstable as it enters/exits the vehicle and during transit. If not carefully managed this may result in the wheelchair tipping over.

If the operation of the winch remote is the reverse of that advised on page 6 figure 1 the load capacity will be reduced. To fix this issue extend the winch to its maximum length without releasing the button, at which point it will begin to retract; the buttons will now perform their original operations.

01-1001-364-R01 Peugeot Horizon & eHorizon User Guide English MCA (05/24)