

Hall dimensions:

Length: 14.6m

Width: 6.7m

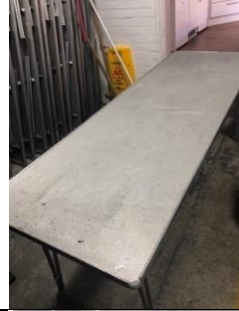
Height to beam: 3.0m



Tables – for indoor and outdoor use:

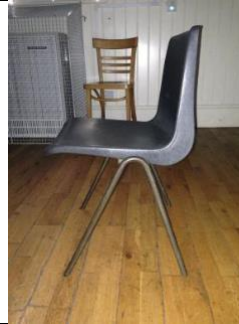
16 x Large: 1.9m x 0.63m

2 x Small: 1.0m x 0.63m



55 x **Plastic Chairs** – for indoor and outdoor use:

43cm x 43cm x 78cm



120 x **Fabric Chairs** for indoor use only:

42cm x 42cm x 84cm




Kitchen:

4.3m x 4.3m

Appliances: Electric oven with induction hob, freestanding microwave, 2 x kettles, 2 x large teapots, 2 small fridges, 1 small freezer, island table, hot water urn, hostess trolley, warming plate



	
<p>Other kitchen/catering equipment:</p> <p>Milk jugs x 6 Sugar bowl x 6 Wine glasses x 100 Pint glasses x 40 Hi Ball glasses x 70 Half pint glasses x 30 Small tumblers x 60 Teacups and saucers x 100 Dinner plates x 100 Side plates x 100 Dessert bowls x 100 Glass dishes x 24 Cutlery x 100 of each Water jugs x 12 Saucepans (suitable for induction hob x 3 Chopping Board x 5 Trays x 4 Various baking trays, cooking utensils and chopping knives</p>	<p>Cleaning equipment:</p> <p>Hoover Brooms Stepladders x 3 Soft brush for sweeping Dustpan & brush Mops and buckets</p>

Note to Hirers:

Hirers are responsible for cleaning the hall after use and bringing sacks to take away ALL rubbish.

All cleaning materials and cloths are to be provided by the hirer and taken away with them.

Toilet rolls and soap are provided in the toilets.

Please DO NOT put fat or food waste products down the sinks or toilets.

ALL rubbish must be taken away by the hirer at the end of the hire period.