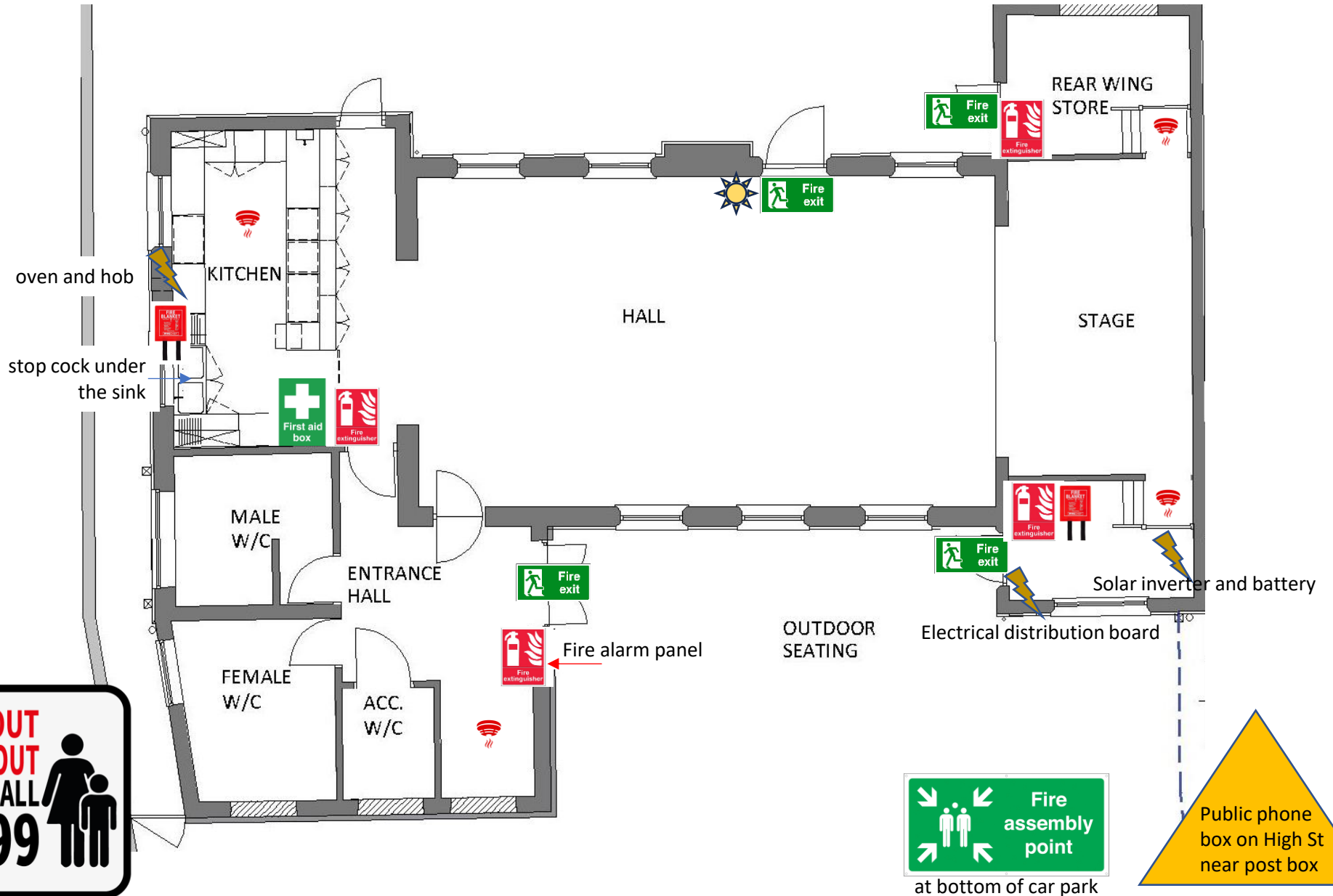


FIRE SAFETY PLAN for Clipston Village Hall

showing Hazards, Equipment and Exits

-  smoke/heat detector
-  alarm sounder and flashing beacon
-  fire blanket
-  fire extinguisher



**GET OUT
STAY OUT
AND CALL
999**



**Fire
assembly
point**

at bottom of car park

Public phone
box on High St
near post box