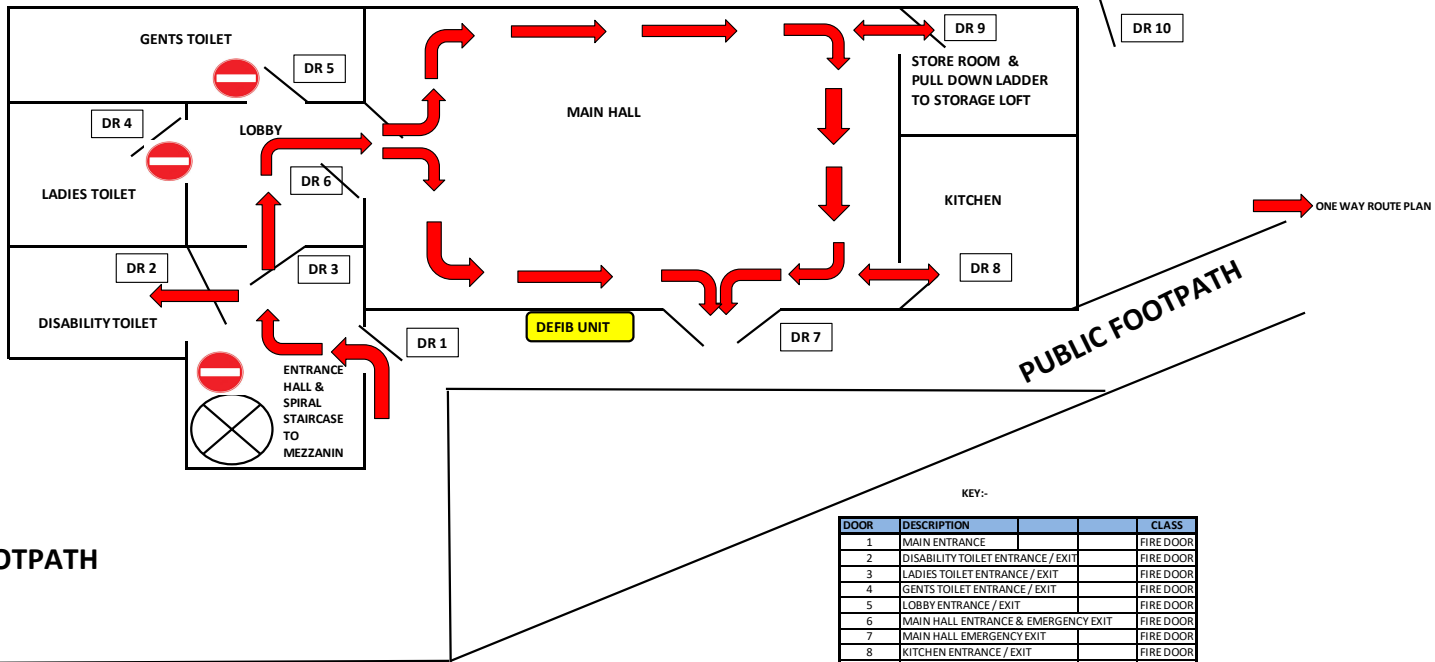


GROUND LEVEL FLOOR PLAN



KEY:-

DOOR	DESCRIPTION	CLASS
1	MAIN ENTRANCE	FIRE DOOR
2	DISABILITY TOILET ENTRANCE / EXIT	FIRE DOOR
3	LADIES TOILET ENTRANCE / EXIT	FIRE DOOR
4	GENTS TOILET ENTRANCE / EXIT	FIRE DOOR
5	LOBBY ENTRANCE / EXIT	FIRE DOOR
6	MAIN HALL ENTRANCE & EMERGENCY EXIT	FIRE DOOR
7	MAIN HALL EMERGENCY EXIT	FIRE DOOR
8	KITCHEN ENTRANCE / EXIT	FIRE DOOR
9	STORE ROOM ENTRANCE / EXIT	FIRE DOOR
10	REDUNDANT EMERGENCY EXIT	FIRE DOOR